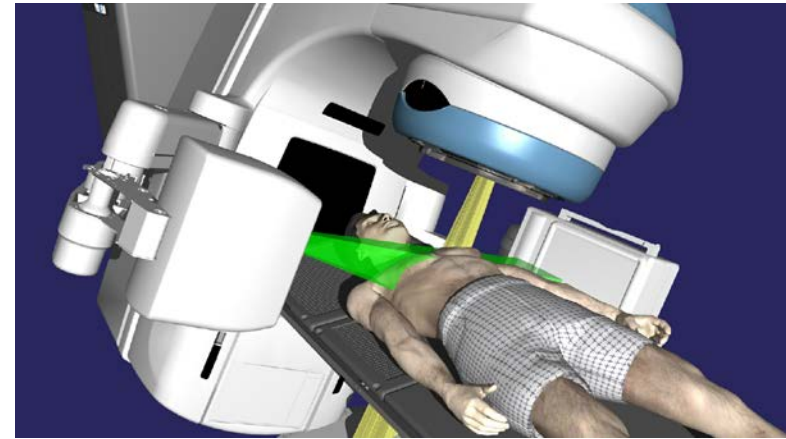
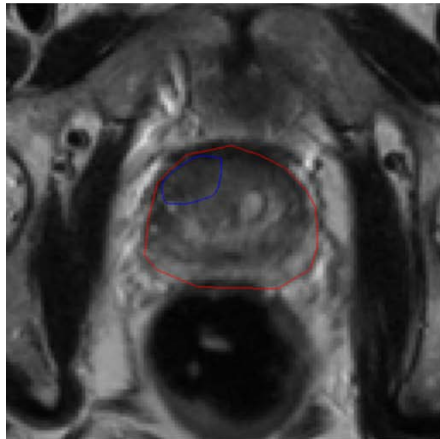
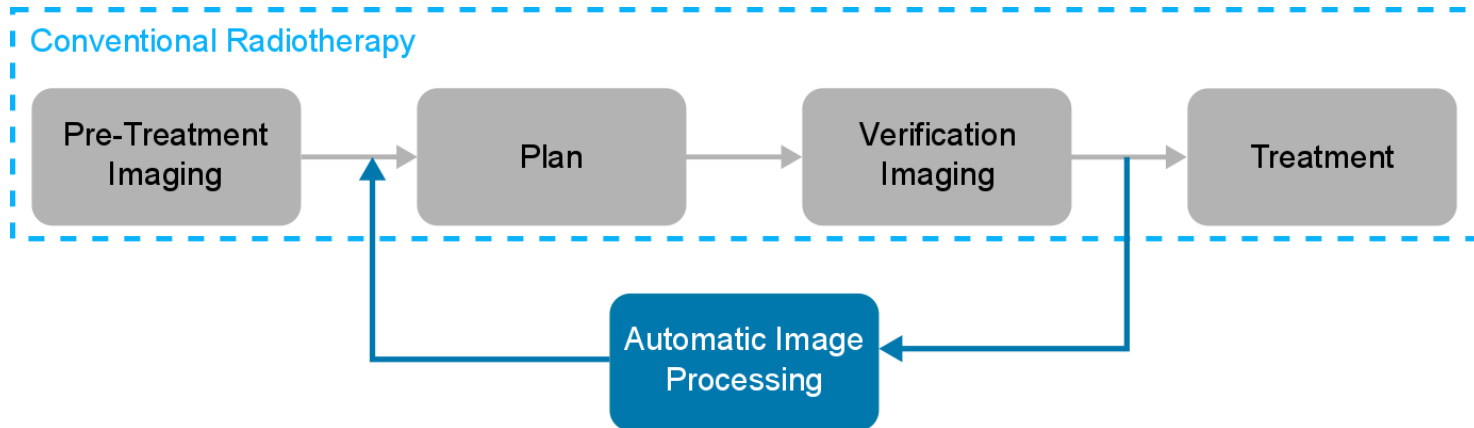
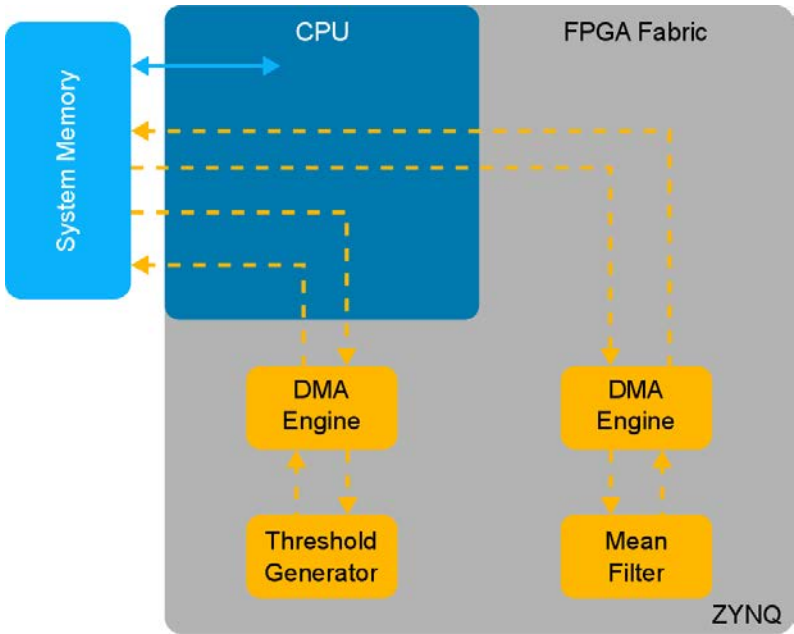


High-Level Synthesis for Medical Image Processing on Systems on Chip: A Case Study

Fraser D Robinson, Louise H Crockett, William H Nailon, Robert W Stewart



Source: Y. Feng et al "Identifying the dominant prostate cancer focal lesion using image analysis and planning of a simultaneous integrated stereotactic boost," *Acta Oncologica*, vol. 54, no. 9, pp.1543-1550, 2015.



SDSoCTM
Environment

